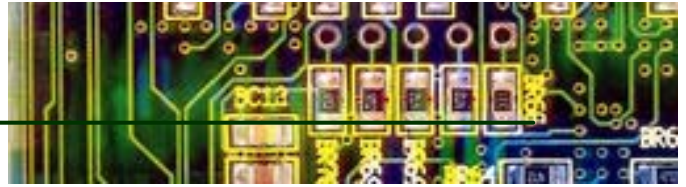


Environmental Sensors

Glutaraldehyde Z-200



Glutaraldehyde Meter

Applications

Environmental Sensor Co.'s glutaraldehyde meter is a hand held instrument that measures glutaraldehyde concentration with a **range of 0-30 ppm** and a **resolution of 0.01 ppm**. The instrument makes it possible to monitor glutaraldehyde vapor in air, while performing operations using glutaraldehyde solution. It is often used for applications such as medical instrument sterilization or chemical processing. The instrument has a LCD display giving real time concentrations in ppm and a time weighted average after 30 minutes of use.

Product Description

The **Z-200** glutaraldehyde uses two filters to eliminate troublesome interferences of the sensor system. Measurements are first made with a filter that permits determination of the background or baseline. Insertion of a second filter then permits the measurement of glutaraldehyde. The instrument prompts the user for all required actions. The procedure is simple. The instrument prompts the user to insert one filter, remove it, and insert another. With the use of the filter system, interferences are virtually completely removed. Only certain aldehydes and ketones need to be considered. The filters do not permit separations of these classes of compounds.

The sensing element of the instrument is an electro-chemical cell. The cell is a four-electrode type, which contains a working and an active auxiliary electrode. The signal from the auxiliary electrode is used for temperature compensation and to improve the selectivity of the entire sensor. The sensor response is linear with the concentration of glutaraldehyde in air.



Highlights

- **Time Weighted Average (TWA)**
- **Compact, light weight and durable**
- **Batter status LED**
- **High Reliability**

BC Group International, Inc.
3081 Elm Point Industrial Dr
St. Charles, MO 63301 USA
314-638-3800
314-638-3200 Fax
1-888-223-6763



www.bcgrouppintl.com

Specifications

Environmental Sensors Glutaraldehyde Z-200

Sensor: Electro chemical

Nominal Range: 0-30 ppm

Maximum: 34 ppm

Resolution: 0.01 ppm

Response Time: <60 seconds

90% Peak:

Repeatability: 1% of signal

Linearity: Linear

Baseline Range: +0.1ppm
(Clean Air)

Zero Drift: <0.05

Sensitivity Loss: <5% per year

Operating Temperature: 0-40 °C

Pressure Range: Atmospheric. ± 10%

Relative Humidity: 15 to 90% non-condensing

Dimensions: HxDxW
4.75"x2.5"x1.5"

Weight: 170 gms

Power Source: 9 V Battery

Battery Life: 240 hours

Sensor Life: 2+ Year

Interferences

Some representative examples of the common compounds and the corresponding response signals they give are shown below. Care needs to be exercised about using this instrument in the presence of large concentrations of interfering gases. In addition variations in the baseline, as a result of variations in concentrations of compounds other than aldehydes or ketones, during the course of the measurement (about three minutes), can impact the reading

Cross-sensitivity Data Z-200 Glutaraldehyde Meter		
Gas	Sensor Interference's Percent of Glutaraldehyde PPM	Interference's After Use of Filters
Formaldehyde	100	100
Acetone	2	2
Methyl ethyl Ketone	2	2
Diethyl Ketone	12	12
Acetaldehyde	0	0
Acetic Acid	67	0
Ethylene	125	0
Methanol	55	0
Ethanol	44	0
i-propanol	40	0
Carbon Monoxide		

Specifications subject to change without notice.

BC Group International, Inc.
3081 Elm Point Industrial Dr
St. Charles, MO 63301 USA
314-638-3800
314-638-3200 Fax
1-888-223-6763


BC Group
Integrity is Our Competitive Advantage
www.bcgrouptl.com